

KoolTemp® STS Frozen Shipment Systems

Dry Ice and Suppressed Temperature (-20°C) Shippers



Product Features

- Large selection of sizes and shipping time capacities
- Includes payload and positioning boxes (for dry ice sublimation) to ensure full product protection
- Full qualification documentation
- Choose from cost effective EPS for 48 hour shipments or high R-value polyurethane (PUR) for extended shipping times
- Frozen shipment systems available in non-dry ice version using Koolit Suppressed Temperature (-20°C) gels



Cold Chain Technologies is pleased to present its new listing of dry ice and suppressed temperature (-20°C) shippers.

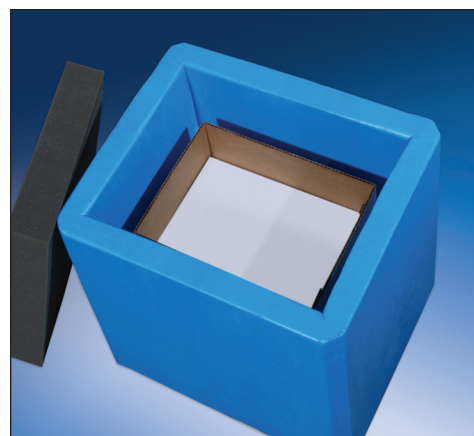
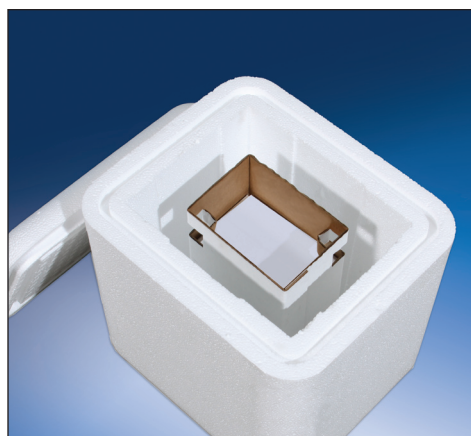
KoolTemp® STS
INSULATED CONTAINERS

This extensive addition to our STS series (Seasonal Transport Systems) features multiple size containers and selective shipping time capacities for your frozen shipment needs.

As with all of our STS, GTS and HP series, these solutions offer full qualification documentation providing you with complete confidence in your shipments.

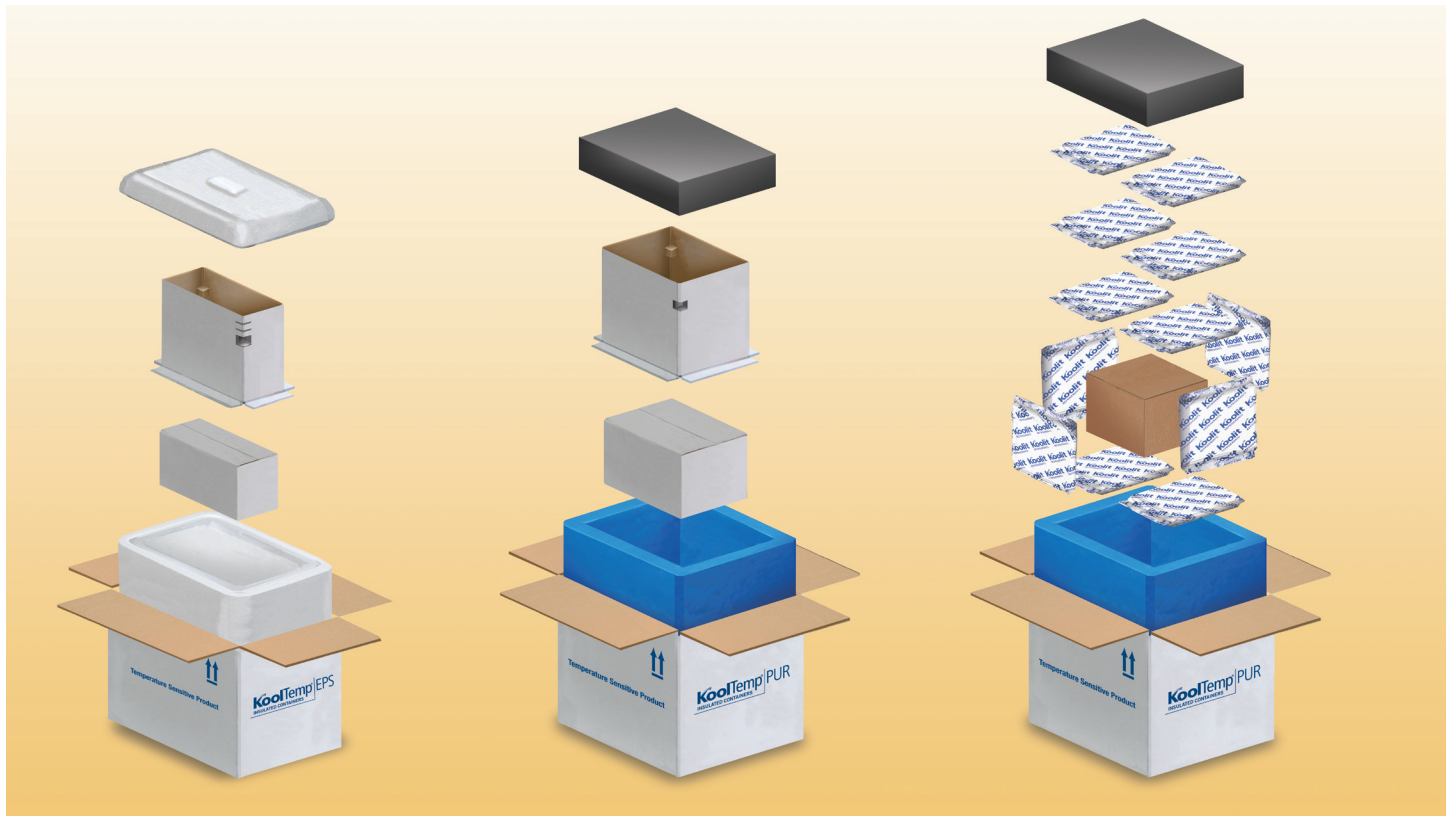


The KoolTemp STS Frozen Shipment Systems are the newest members of our GreenSmart earth-friendly thermal packaging line. For more smart packaging information please visit www.coldchaintech.com



The KoolTemp STS systems are available in cost effective EPS or high R-value PUR. Both include payload and positioning boxes to ensure full product protection.

Used with pelletized dry ice or our Koolit suppressed temperature gel packs (-20°C), the STS Frozen Shipment Systems are available in the following sizes and selected shipping time capacities:



48 Hour EPS
Dry Ice Systems

48 to 120 Hour PUR
Dry Ice Systems

Non Dry Ice Systems
(-20°C Koolit Refrigerant)

KoolTemp STS Frozen Shipment Specifications										
Dry Ice System		Inches			Cubic Ft. Volume	Lbs. of Dry Ice to Maintain Below -20°C				
		Length	Width	Height		48 Hrs	72 Hrs	96 Hrs	120 Hrs	
STS-KT39-DI	Payload	5.88	4.00	7.25	0.10	12				
	OD	14.75	12.75	14.50	1.56					
STS-KT91-DI	Payload	12.88	5.13	7.50	0.29	17				
	OD	22.00	14.25	15.00	2.50					
STS-KT3300-DI	Payload	16.38	13.00	6.75	0.83	29				
	OD	25.75	22.25	13.50	4.48					
STS-KT5400-DI	Payload	16.25	12.25	12.75	1.47	39				
	OD	25.88	19.75	22.88	6.63					
STS-U39-DI	Payload	6.00	4.00	4.75	0.07	10	15			
	OD	14.38	12.38	12.13	1.46					
STS-U186-DI	Payload	14.00	10.00	8.00	0.65	26	35	44	52	
	OD	23.13	19.13	19.25	4.93					
STS-U327-DI	Payload	14.00	13.75	12.75	1.42	28	40	52	64	
	OD	22.63	22.38	23.00	6.74					
Suppressed Temperature (-20°C Gel Packs) System		Inches			Cubic Ft. Volume	Hours Below 0°C	Hours Below -10°C	Hours Below -15°C	Hours Below -20°C	
		Length	Width	Height						
STS-U39-ST	Payload	8.00	6.00	4.50	0.10	65	53	46	30	
	OD	14.38	12.38	12.13	1.46					
STS-U186-ST	Payload	13.90	9.90	5.30	0.40	79	66	54	19	
	OD	23.13	19.13	19.25	4.93					
STS-U327-ST	Payload	14.30	14.10	12.60	1.50	87	67	54	21	
	OD	22.63	22.38	23.00	6.74					

Koolit® and KoolTemp® are registered trademarks, and Cold Chain Technologies and GreenSmart™ are trademarks of Cold Chain Technologies.

Copyright © 2010, Cold Chain Technologies. All rights reserved.



29 Everett Street
Holliston, MA 01746
T: 800.370.8566 / 508.429.1395
F: 508.429.9056
W: www.coldchaintech.com
E: info@coldchaintech.com