

KoolTemp® STS-3100-RFG Shipping System



Seasonal Pre-Qualified 2°C to 8°C 86+ Hour Pallet Shipper

Product Features

- Payload Area:
36-1/2" x 25-1/2" x 30-1/2"
- Outside Dimensions:
47-7/8" x 40" x 45-1/4"
- Pre-qualified, seasonal 2°C to 8°C pallet-sized shipping solutions for 86+ hours in hot and cold conditions
- Easy to setup and packout using our Koolit refrigerant sleeves
- Thoroughly tested and documented – pre-qualified for minimum and maximum loads
- Re-usable components – supported by Cold Chain Technologies Green Smart return and reuse program.
- Ships knocked down



The KoolTemp STS-3100-RFG Pallet Shipper features a large payload capacity and price effective solution for maintaining 2°C to 8°C shipments. This seasonal shipper, with same components for summer and winter shipments, is part of our Seasonal Transport System series (STS series) that provides full qualification documentation, easy pack out, and in stock delivery to meet the needs of your distribution team.

This reusable product is supported by Cold Chain Technologies Green Smart return and reuse program that provides your customers with package recycling options so that you can ship with confidence while preserving our planet.

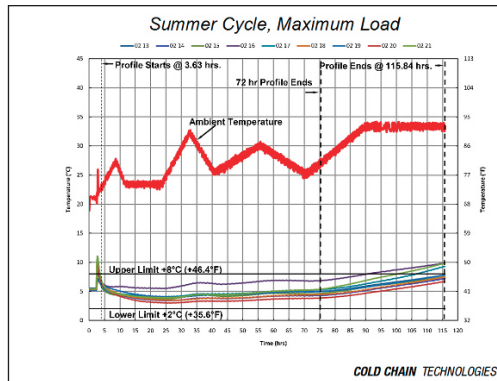
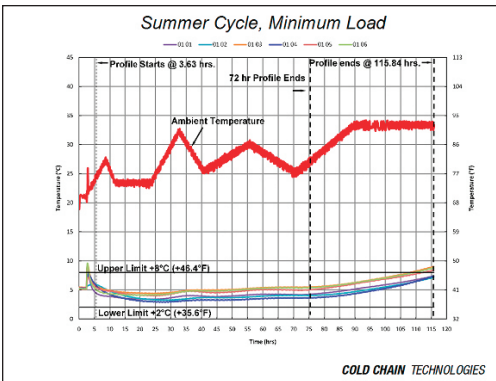


The KoolTemp Seasonal Transport System (STS series), features a full line of documented, pre-qualified, seasonal temperature protection packaging solutions for your shipments. This economical line of thermal shippers provides you with a lightweight, efficient way to protect your valuable shipments while maintaining specific internal temperature requirements of frozen, refrigerated or room temperature.

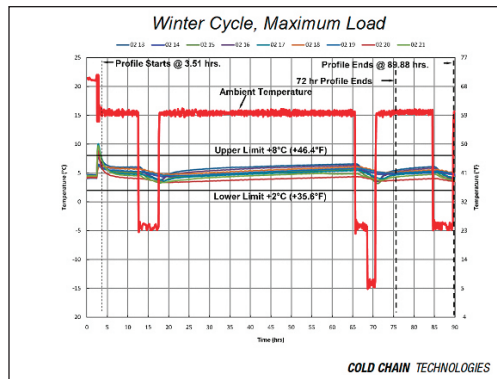
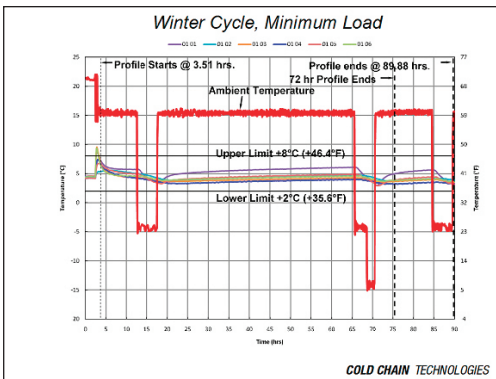
Our large choice of sizes and temperature ranges offers customers flexibility and efficiency for their varying thermal packaging needs. Easy to follow pack out information for the STS series is available on our web site.

KoolTemp STS-3100-RFG Shipping System Specifications

Part No.	Wall Insulation	Available Payload Area (ID) LxWxH	Outside Dimensions (OD) LxWxH	Weight
STS-3100-RFG	2-1/2" PUR	36-1/2" x 25-1/2" x 30-1/2"	47-7/8" x 40" x 45-1/4"	300 lbs.



Time-temperature graphs illustrate performance of the KoolTemp STS-3100-RFG pallet shipper under the varied testing conditions. Ambient temperatures are displayed with red lines, and 2°C to 8°C temperature boundaries are displayed with black lines. Internal payload temperatures measured by thermocouples during testing are shown with multiple colored lines.



Koolit® and KoolTemp® are registered trademarks, and Cold Chain Technologies and GreenSmart™ are trademarks of Cold Chain Technologies.
Copyright © 2010, Cold Chain Technologies.
All rights reserved.



29 Everett Street
Holliston, MA 01746
T: 800.370.8566 / 508.429.1395
F: 508.429.9056
W: www.coldchaintech.com
E: info@coldchaintech.com