



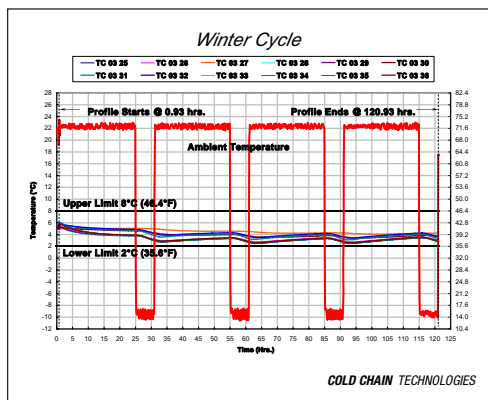
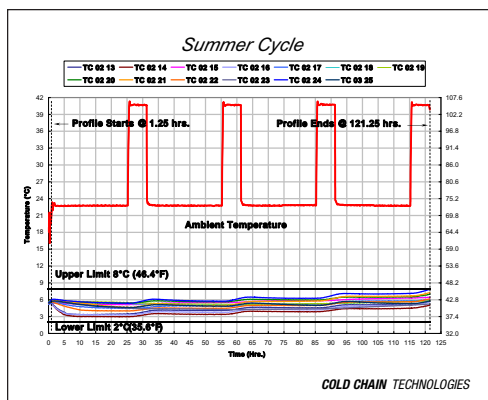
## KoolTemp GTS-5420 Specifications

Part Number	Standard Components	Qty / System	Average Product Weights	
U5420-5-TB	2.5 PCF Density Molded Polyurethane Pallet Shipper	Top/Bottom Base/Lid	2	68.6lb.
U5420-5-S		Sides (Left/Right)	2	52.2 lb.
U5420-5-E		Ends (Front/Rear)	2	50.2 lb.
4015-CB	Foam Corners for Payload	4	1.6 lb.	
U5420-TRAY-07	Tray to Hold Refrigerant Sleeves	1	26.1 lb.	
305-SLV399-R 305-SLV399-F	Refrigerant Sleeves Each sleeve has nine Koolit #305F (1.89# each) foam bricks	13* 8**	227.5 lb. 140.0 lb.	
030336-CB	Corner Boards for Strapping	4	1.2 lb.	
—	Customer-Supplied Inner Pallet —	—	—	
—	Available Payload Area Including Pallet 48" x 40" x 38.3" ID	—	—	
U5420-SKID	Four Way Outer Pallet 68" x 58" x 4.5"	1	85.0 lb.	
—	Outside Dimensions with 4.5" Pallet 68" x 58" x 63.5"	—	—	

### Total Actual Shipping Weight

(2°C to 8°C packout with refrigerants and outer pallet, without inner pallet and product payload)

~652.4 lb.



Time-temperature graphs illustrate performance of the KoolTemp GTS-5420 under the varied testing conditions. Ambient temperatures are displayed with red lines, and 2°C to 8°C temperature boundaries are displayed with black lines. Internal payload temperatures measured by thermocouples during testing are shown with multiple colored lines.

Koolit is a registered trademark, and Cold Chain Technologies and KoolTemp are trademarks of Cold Chain Technologies.

Patent pending. Copyright © 2008, Cold Chain Technologies. All rights reserved.

**COLD CHAIN TECHNOLOGIES**

Engineered Solutions for Thermal Packaging

Cold Chain Technologies  
29 Everett Street  
Holliston, MA 01746

T: 800.370.8566 / 508.429.1395  
F: 508.429.9056  
W: [www.coldchaintech.com](http://www.coldchaintech.com)  
E: [info@coldchaintech.com](mailto:info@coldchaintech.com)

### Precondition Minimum of 24 Hours

*	5°C ± 3°C
**	-20°C ± 5°C