

KoolTemp™ GTS-171 Shipping System

Pre-Qualified, Reusable

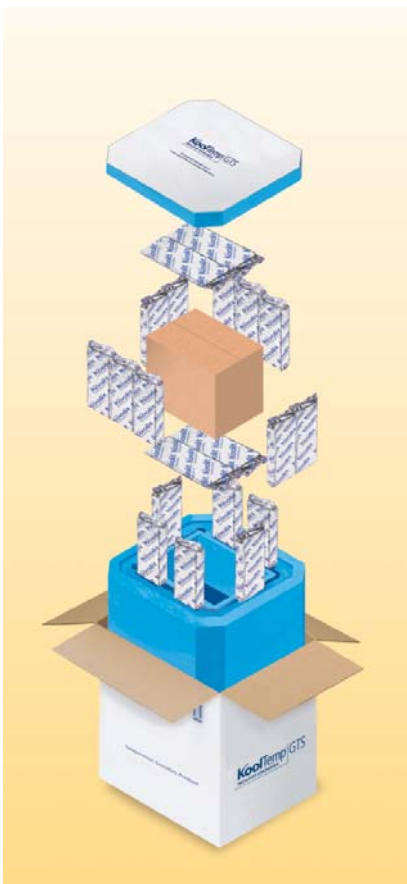
The GTS Series

Cold Chain Technologies' (CCT) GTS series features a full line of reusable small- (GTS-35) to pallet-sized (GTS-5420) thermal solutions for extreme weather conditions ...

continued on second page



KoolTemp GTS-171 Shipping System



KoolTemp GTS-171

Pre-Qualified Seasonal Cold Chain Shipper

Recommended Use

- Domestic and international shipments of medium size payloads of valuable vaccines, pharmaceutical products, and blood
- Payload area (ID): 16" x 11³/₈" x 12⁷/₈"
- Outside dimensions (OD): 27³/₄" x 23¹/₈" x 22³/₄"

Pre-qualified for Time/ Temperatures

- 2°C to 8°C for 52 hours under hot conditions
- 2°C to 8°C for 72 hours under cold conditions

Product Features

- Seasonal – pre-qualification study performed for 2°C to 8°C at hot and cold conditions
- Easy packout – a simple 1-2-3 packout using our Koolit® refrigerants
- Lightweight at ~42 lbs.
- Thoroughly tested – pre-qualified for minimum and maximum loads
- Environmentally safe-reusable shipper contains no ozone-depleting chemicals

The GTS Series, *continued*

... By offering a wide range of sizes, we can closely match the dimensions of the product payload and the container's payload area. This presents the opportunity to control shipping costs by eliminating unnecessarily large container shipped with empty space. The modular design of the GTS series allows for reuse under proper conditions and replacement.

The GTS series' simple universal packout minimizes costs, including labor and turnaround time. Pre-charged Koolit bricks are fit into a variety of carefully designed coolant compartments away from the product area. GTS containers are thermally sealed to ensure proper performance. Packout instructions are printed on the lid or wall of each GTS container.

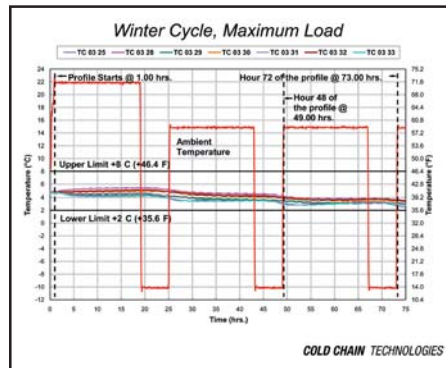
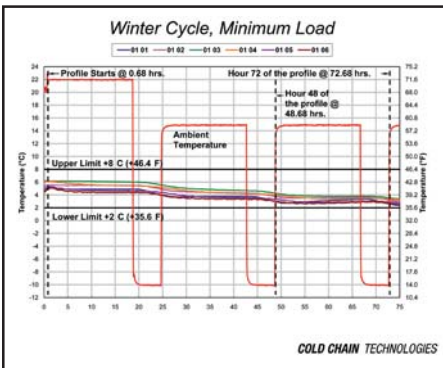
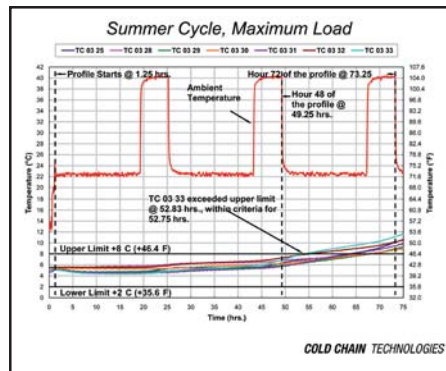
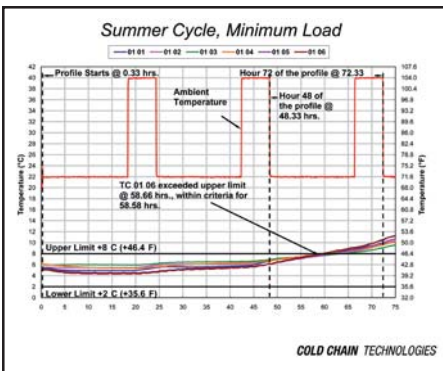
The PUR is designed to minimize temperature gradients and optimize thermal efficiency. CCT's proprietary, environmentally safe, high R-value custom molded polyurethane (PUR) formulation is non-ozone depleting (no CFCs or HCFCs), and is EPA compliant. In CCT's ISTA-certified and cGMP compliant labs, during product design and development, each GTS model is prequalified at minimum and maximum loads under summer and winter conditions. Payload specific qualification is available.

KoolTemp GTS-171 Specifications

Part No.		Outside Dimensions (L x W x H)
GTS-171	Shipping System	27¾" x 23⅛" x 22¾"
GTS-171-KD	Knocked Down	
GTS-171-SU	Set Up	

Part No.	Standard Components	Qty. per System	Qty. per Case
U260-MT	Rigid Molded PUR Lid <i>Height includes full thickness of lid. Includes white B-flute packout instructions.</i>	1	–
U260-MB	Rigid Molded PUR Base	1	–
U260-MI	Rigid Molded Inner Container	1	–
342F	Koolit® Refrigerant Bricks – Room Temp.	14	24
	Koolit® Refrigerant Bricks – Frozen	6	–
ZU357PB-C	Payload Box, RSD, E-Flute	1	–
272222-C	Outer Corrugated Container, C-Flute	1	–

Total Shipping Weight (without product payload):	41.5 lbs.
---------------------------------------------------------	------------------



Time-temperature graphs illustrate performance of the KoolTemp GTS-171 under the varied testing conditions. Ambient temperatures are displayed with red lines, and 2°C to 8°C temperature boundaries are displayed with black lines. Internal payload temperatures measured by thermocouples during testing are shown with multiple colored lines.

COLD CHAIN TECHNOLOGIES
Engineered Solutions for Thermal Packaging

Cold Chain Technologies
29 Everett Street
Holliston, MA 01746

T: 800.370.8566 / 508.429.1395
F: 508.429.9056
W: www.coldchaintech.com
E: info@coldchaintech.com

Koolit® is a registered trademark, and Cold Chain Technologies, and KoolTemp™ are trademarks of Cold Chain Technologies. Copyright © 2009, Cold Chain Technologies. All rights reserved.